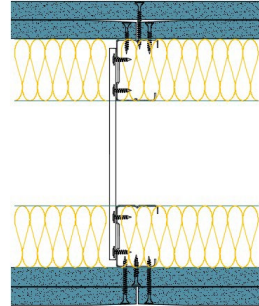


TWC50-K-60(2x50)(200) - SPEEDLINE System Data Sheet - Version V1 (24-10-23)

Twin SPEEDLINE 50mm 'C' Stud Partition @600mm Ctrs, with 2x Knauf 15mm Soundshield Plus each side, 50+50mm APR



System Performance Breakdown

Fire Resistance:

BS476 Part 22:1987:

Test Ref & Date or Applied Ref & Report:

Max Height:

Thickness:

Duty Grade: BS 5234: Part 2:1992:

Sound Insulation:

120/120 Minutes (Integrity/Insulation).

BMT/FEP/F14077 - BRE Report P102396-1011B

Refer to Speedline Specification Clause

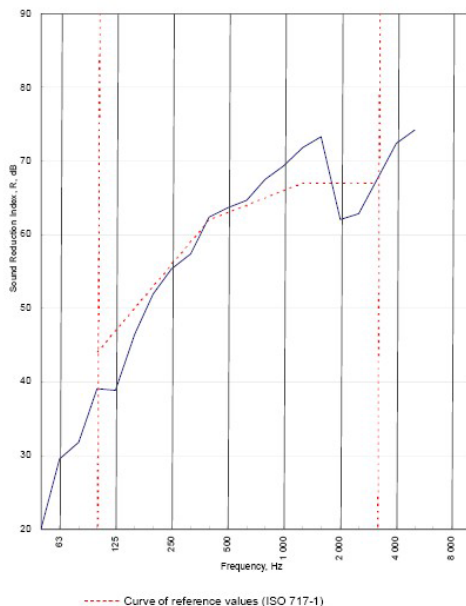
200 mm. (At Base Track, Excluding Finishes)

Severe - Annexes A-F

63 R_w dB, -8Ctr Date Tested or Assessed Against - 27/11/2012

Test Code:
H18044AA
Test Date:
27/11/2012

Freq. Hz	R dB
50	20.1
63	29.5
80	31.8
100	39.1
125	38.9
160	46.5
200	51.9
250	55.4
315	57.4
400	62.4
500	63.7
630	64.7
800	67.5
1 000	69.4
1 250	71.8
1 600	73.3
2 000	62.1
2 500	62.9
3 150	67.5
4 000	72.4
5 000	74.3
6 300	
8 000	
10 000	



Rating according to BS EN ISO 717-1:1997	R_w (C;Ctr) = 63 (-3;-8) dB		
Evaluation based on laboratory measurement results obtained by an engineering method:	C_{50-150} = -7 dB	C_{50-500} = -6 dB	$C_{100-500}$ = -2 dB
	$C_{v,50-150}$ = -20 dB	$C_{v,50-500}$ = -20 dB	$C_{v,100-500}$ = -8 dB

TESTED AT ONE OF THE UKAS ACCREDITED LABORATORIES BELOW

- B.T.C (H-Ref on Graph)
- B.R.E
- AIRO
- S.R.L

Customer: Metsec plc Hepsec Division

BTC 18044A: Page 9 of 11



SPEEDLINE Drywall Systems, Adsetts House, 16 Europa View, Sheffield Business Park, Sheffield, S9 1XH.

Tel: 0114 231 8030.

Email: enquiries@speedlinedrywall.co.uk

(As per the requirements set out in ISO/IEC 17025:2017 regarding test data the results stated have been carried out by voestalpine Metsec plc as part of the contract to supply Speedline Metal Sections to SIG Plc)